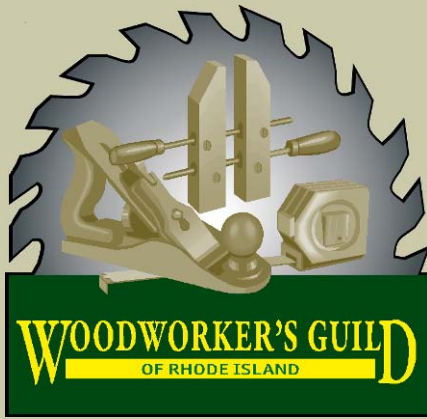


Shavings

By The
Woodworker's Guild of Rhode Island
Volume 14 Issue 10 November 2010
<http://www.wwgri.org>



"The highest reward for a man's toil is not what he gets for it but what he becomes by it."

John Ruskin

Upcoming Events and Announcements

Announcements

- ❖ 2010 Meeting Dates
 - ~ November 3rd
 - ~ December 1st

A Message from the Officers

The year is quickly winding down and it appears to have been a successful one for our Guild. We will have our new website up and running shortly, we've had some wonderful presenters and we have been fortunate to have many Guild members assist and volunteer in a variety of activities. The coming months should be exciting. Thank you all in advance.

UPCOMING MEETINGS!

Meetings are held on the 1st Wednesday of the month at 7 PM, except for the month of July, and are located at the North Scituate Community House, West Greenville Rd, North Scituate, RI 02857

November 2010 – Presentation to be determined

Guild Officers for 2010-2011

President	John Pietrella	johnpietrella@gmail.com
Vice President	Jeff Arsenault	jeffreya223@gmail.com
Secretary	Dave Wudyka	djwudyka@comcast.net
Treasurer	Jack Keach	keach@cox.net
Past President	Peter Silvestre	psilvestre@comcast.net

Guild Committees and Programs

Programs Director	Bob Fontenault	bfontenault1@cox.net
Promotions Director	Paul Morrissey	pmjr30@verizon.net
Hospitality	Lynn Hosford	tempsleve@cox.net
	David Rinebolt	aquent@cox.net
Newsletter/Website	Henry Allsworth	henry@allsworth.com

Guild Addresses

Mailing Address:

Woodworker’s Guild of RI
 PO BOX 520
 No. Scituate, RI 02857

Web Address:

<http://www.wwgri.org>

Meeting Address:

No. Scituate Community House
 W. Greenville Rd/RI-116
 No. Scituate, RI 02857

WWGRI NEWS:

❖ **Website Start-up**

We are almost there. The new web site will be up and running by the end of the month. Thanks for your patience but the result will be worth the wait.

❖ **Guild Shirts**

Payment is due for the Guild shirts that were ordered. Please bring your checkbook to pay Jack Keach for the shirts.

❖ **Hospitality Update- no one will go hungry**

Thanks to all the members that signed up to cover a month of hospitality. We will be sending a list of names and months for the people who signed up so if you need to switch you can. The person who does hospitality one month will hand off all of the gear at the end of the meeting to the person who will cover the next month

❖ **Membership Dues**

Well it is getting to be that time of year again. Annual dues are to be paid January 1, 2011 but it is never too early to get your dues in. It will be \$28 for the year. Feel free to see Jack Keach at the meeting to pick up your new membership card.

❖ **Scituate Art Festival**

The art festival was a big success for the guild. We were able to reach out to many, many people and hand out Guild brochures. We had a few people join and many promise to visit us. We displayed some of our finished projects including a kayak, bowls, and vase. We demonstrated pen turning and Channel 10 filmed us for the news. Thank you to everyone that came to help and a big thanks to Ed Charpentier for being the organizer.

❖ **Christmas Party**

The annual Christmas party will be held in place of the December meeting on December 1 at 7:00 PM at the community house. Once again we will have food, music and a Yankee Swap. This year we will do a separate swap for women. All women should bring a swap for a woman and all men should bring an appropriate woodworker's swap. When you wrap the gifts, women's gifts should have a bow and men will not. The value of the swap should be a minimum of \$15.00. Hopefully we will have some new prizes and activities for everyone. Hopefully everyone can bring their spouse for a fun night.

October 2010 Meeting Recap:

By Bob Fontenault

On only three days notice, Esmond resident, Neil Salley, saved the day by accepting my invitation to speak to our group for the October meeting.

After seeing his feature article in a previous edition of the Smithfield magazine, I knew that he could potentially be a speaker for our group at some time in the future.

A retired hub and die cutter by trade, I called upon Mr. Salley to fill in on very short notice.

Mr. Salley has achievements in many "artistic" type jobs and he certainly rose to the occasion and enlightened the group with his amazing display of wood carvings.

His early experience doing ice carvings as a chef at Brown University and photo engraving became training for a long career as a hub and die cutter. He worked in the religious art and jewelry industry, Mr. Salley was always able to hone his natural artistic abilities.

Along the way, he was also able to develop his talent as a wood carver, with a special interest in nature and animal carving. Mr. Salley has drawn a lot of his inspiration from the Native Americans of the Northwest. His four foot high carving of an Indian chief in full head dress was truly impressive!

Other displays for our viewing pleasure and discussion included: numerous chipmunks, three dimensional eagle, house sign with two different views of the same homestead, (approaching & leaving), and various canes which are shaped from roots found in the woods.

All in all a very enjoyable presentation for our membership to enjoy!



Native American Carving



Canes



Chipmunks

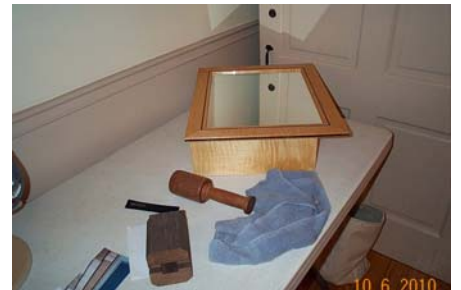
October Show and Tell



By Walter Powell



By Walter Powell



By John Porto



By Ed Charpentier



Finished Pumpkin by Mike Higgins



50/50 Prize Winner Bob Fontenault

Off-Cuts:

❖ Woodworking Classes Available at Keeseh Studio – Courses Now Available

The following classes are available at Keeseh Studio. For full class details go to

http://keeseh.com/?page_id=9 Keeseh Studio is located at 999 Main Street, Suite 701
Pawtucket, RI (248) 877-4425 - <http://www.keesehstudio.com> , email: info@keesehstudio.com.

Blog: www.keesh.com

Facebook: <http://www.facebook.com/pages/Keeseh-Studio/356389934172>

Twitter: <http://twitter.com/keeseh>

CURRENT COURSES

Hand Tools Workshop

Length: 2 classes, 3 hours each

Price: \$100+\$35 Material Fee

Instructor: John Pietrella

Time: Tuesday/Thursday, 7-10pm **Dates:** Oct 12 & 14

Inlay

Length: 3 classes, 3 hours each

Price: \$135+35 Material Fee

Instructor: John Pietrella

Time:Saturdays, 1-4pm**Dates:** Oct 23, 30, & Nov 6

Sharpening Workshop

Length: 2 classes, 2 hours each

Price: \$75

Instructor: John Pietrella

Time: Thursdays, 7-9pm **Dates:** Oct 21 & 28

Reviving Tools

Length: 3 classes, 2.5 hours each

Price: \$125

Instructor: John Pietrella

Time: Tuesdays, 7-930pm **Dates:** Nov 9, 16, & 23

Make Your Own Plane

Length: 2 class, 3 hours

Price: \$100 + \$60 Materials

Instructor: Steven Butler

Session 1: Tuesdays, 7pm – 10pm **Date:** Oct 19 & 26

Session 2: Thursdays, 7pm – 10pm **Date:** Nov 11 & 25

COURSES CONTINUED**Electric Guitar Building**

Length: 6 classes, 2.5 hours each

Price: \$225+\$160 Material Fee

Instructor: Nick Holcomb

Time: Sundays, 1pm – 330pm **Dates:** Nov 7, 14

Above and Beyond Molds

Length: 6 classes, 2.5 hours each

Price: \$225+\$160 Material Fee

Instructor: Matthew Cavallaro

Time: Mondays, 7pm – 930pm **Dates:** Nov 8, 15, 22, 29, Dec 6, 13

Jump Start Woodworking

Length: 1 class, 4 hours

Price: \$75

Instructor: Asher Dunn

Session 2: Saturday, 1pm – 5pm **Date:** Nov 13

Digital Fabrication Workshop

Length: 2 classes, 3 hours each

Price: \$100+\$40 Material Fee

Instructor: Asher Dunn

Time: Mondays, 7-10pm **Dates:** Nov 15 & 22